



Standard-Definition Professional Graphic System with SD In / SD Out, CC, Video Squeeze and Graphic Overlay

THE CHYTV GROUP



Live SD Video Input ... Customized

The ChyTV Plus II is a unique product combining graphics and text with live standard definition NTSC and PAL video both in overlay or squeeze-back modes. As standard definition products are vanishing, the ChyTV Plus II carries on the ability to combine live SD video in composite or component formats both In and Out with in a true SD video infrastructure, including passing closed captioning. Still commonly in use in many public, education, government (PEG) and military installations, SD continues to be an important format to professionally support. ChyTV Plus II provide the same basic functionality as the legendary ChyTV Plus and more such as video clip payout. In addition, internal operating system security hardening measures have been installed to prevent unwanted external intrusions and hacking.

Like all ChyTV products, the *Plus II* gives you full control over each element on the page. But with the *Plus II*, you can take in live composite, component or S-Video and squeeze and position it within your content *uniquely* from page to page. You can have a full motion clip as a background with layered graphics, text and animations on top, along with a live SD video window of any size and position, or a variety of other arrangements. Ideal for digital signage, ChyTV *Plus II* utilizes the same ChyTV Tools utilities to manage the projects and is completely compatible with existing ChyTV units. Like all ChyTV products, the *Plus II* features the highest quality dynamic text and effects.

Text and Graphics Image Engine

The ChyTV *Plus II* features an internal MPEG clip player and has the ability to manipulate the video clip either in a window that is surrounded by graphics and text or to superimpose the message over the video background. In addition, full screen graphics can be displayed with dynamic text, logos and animations. A versatile play-list scheduler allows for dynamic programming. The supplied ChyTV Tools user interface allows for direct control of the ChyTV *Plus II*, or multiple ChyTV *Plus II*'s can be added to the ChyTV.net server for automatic remote content updates.

Easy Integration

The 1 RU ChyTV system is easy to configure in a display system or integrated into an existing SD video infrastructure. The graphic and text information coupled with programmable audio clips may be displayed on a single TV screen or broadcast throughout the facility. All graphic pages can then be scheduled from a simple, intuitive scheduling interface for either automatic looping or date/time payout.

Features

- Live SD Input, both windowed or full-screen overlaid. Component, YUV, S-Video and Composite
- Same features as the well-known ChyTV Plus and more
- Layered page elements include live video, clips, text, graphics and backgrounds
- Full-screen clips as animated backgrounds overlaid with dynamic text and graphics.
- Dynamic real-time Text and Graphics
- Squeeze and position live video and clip player windows, including dynamic transitions
- Dynamic broadcast quality effects such as text pushes, fades and crawls
- Animated Text, Graphics and Logos using GIF, TGA, MPEG and more
- Multiple text and graphic zones may be independently sized and positioned
- Page scheduling, including looping durations or specific day, date and time control
- External data interfaces for real-time data updates such as news, sports, stock and weather
- Interfaces with a variety of peripheral devices including RFID, touch screen, contact closure switches, serial control and more.



Technical Specifications

Video Outputs

Digital:
HDMI Preview
Analog (via Breakout Cable):
YUV, Component, S-Video and composite

Video Inputs

Analog (via Breakout Cable):
YUV, Component, S-Video and composite

Video Formats

NTSC, PAL

Audio Inputs / Outputs

2 Channel RCA HiFi audio in 24-bit.

Interfaces

USB 2 x USB 2.0, 2 x USB 3.1
Ethernet 10/100/1000 BaseT (RJ-45)

Weight

8.0 lbs

Dimensions

H x W x D
- 1 RU
48.26 x 27.94 x 4.45 (cm)
19.00" x 11.00" x 1.75"

Power Supply

Output Power 270W
AC Input 90V to 264V Full Range 47Hz ~ 63Hz
- Complied with Flex ATX and ATX12V Standard
- Active Power Factor Correction (PFC) Meet EN61000-3-2
- Compatible with EU Directive 2002/95/EC (RoHS)
- 80 Plus High Efficiency
- Low Noise and Ripple
- Thermal Fan Speed Control Function
- Output Over Voltage, Short Circuit, and Over Current Protection

Models

ChyTV Plus II

Part

7A00400

Software

- ChyTV Author** – WYSIWYG content authoring and management tool. Supports the following formats:
Fonts: Any TrueType and OpenType
Images: PNG, JPG, GIF, TIFF, TGA, BMP
Video: MPG2, MPG4, MOV, AVI, QuickTime
- ChyTV Tools** – User interface for control and content Management

Warranty – 1 Year factory warranty.
Extended warranties available.

Typical Customers Include:

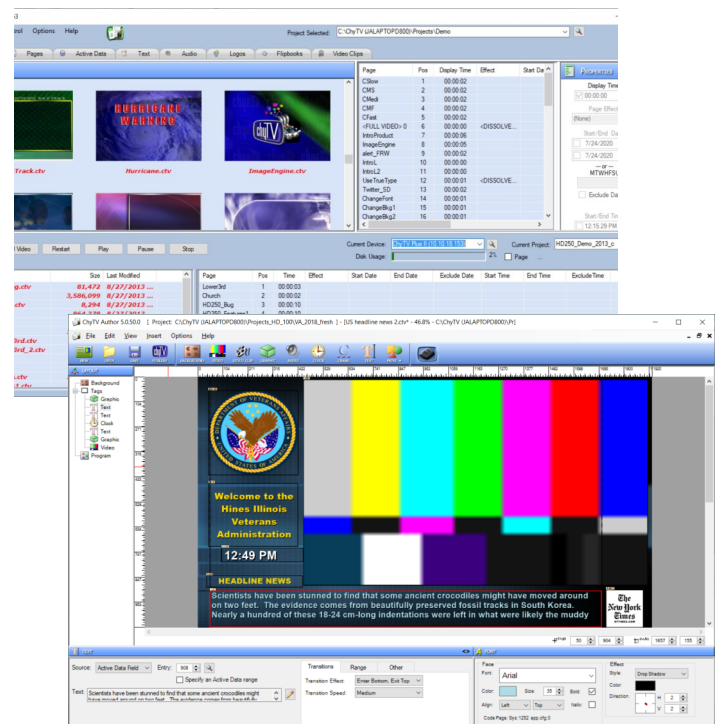
Education K1 to K12, Municipalities, Hospitals, Campuses, Military Facilities, Government Buildings, Waiting Rooms, Corporate Lobbies, Hotels, Bars, Restaurants and Cafes, Senior Care Facilities, Residential Communities (Apartments & Complexes), Service Providers (Lawyers, Accountants, Salons, Barbers, Dojos, Dance Studios), Retailers, Auto Dealers / Shops, Health Care Providers (Doctors, Dentists, Eye Doctors, Chiropractors, etc.)



ChyTV Plus II Front



ChyTV Plus II Rear



ChyTV Tools and ChyTV Author Interfaces

Web:

www.ChyTV.com

Email:

sales@chytv.net

Phone

631 542 2505



July 2020
Subject to Change

